

# New Module (July 23): Virtual Penetration Testing

## 📄 New Module Release

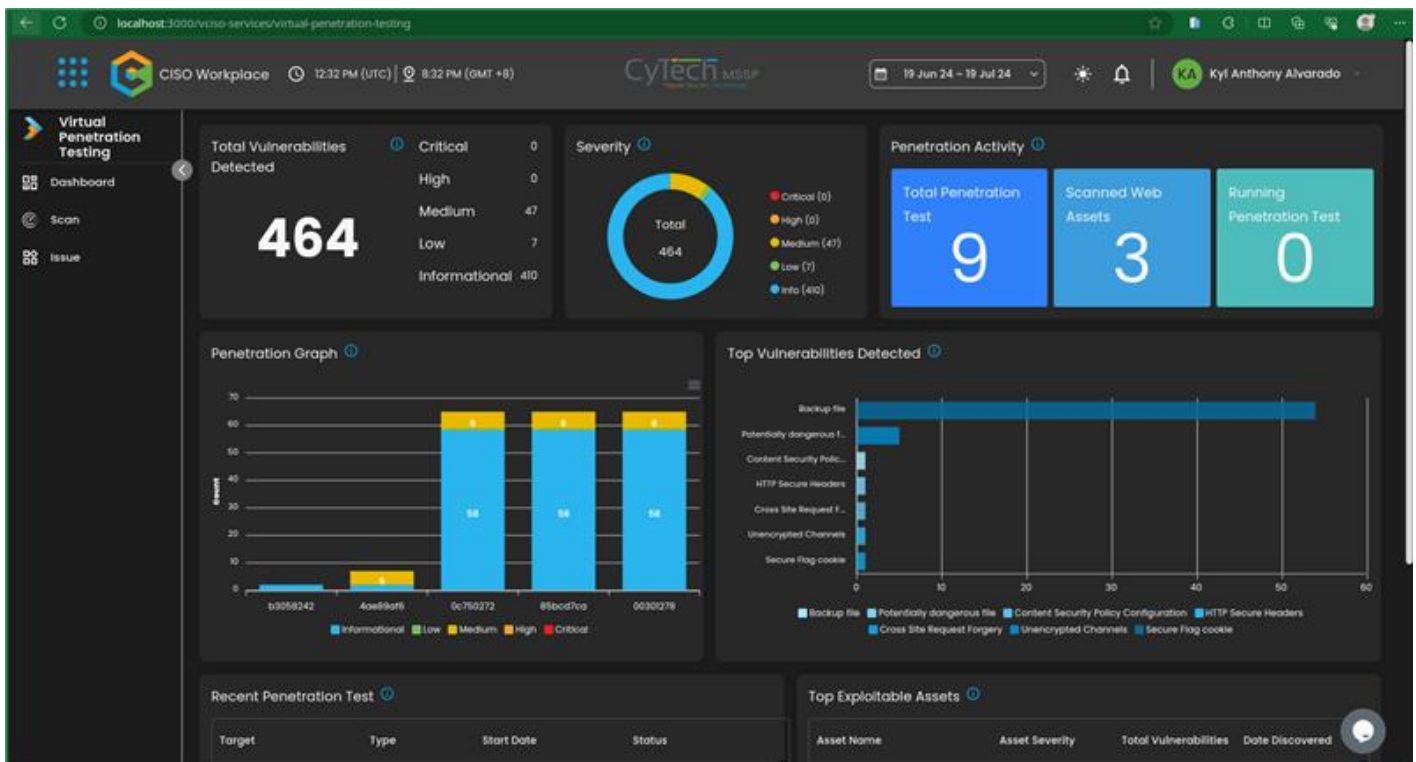
We've just dropped a new module: **Virtual Penetration Testing**

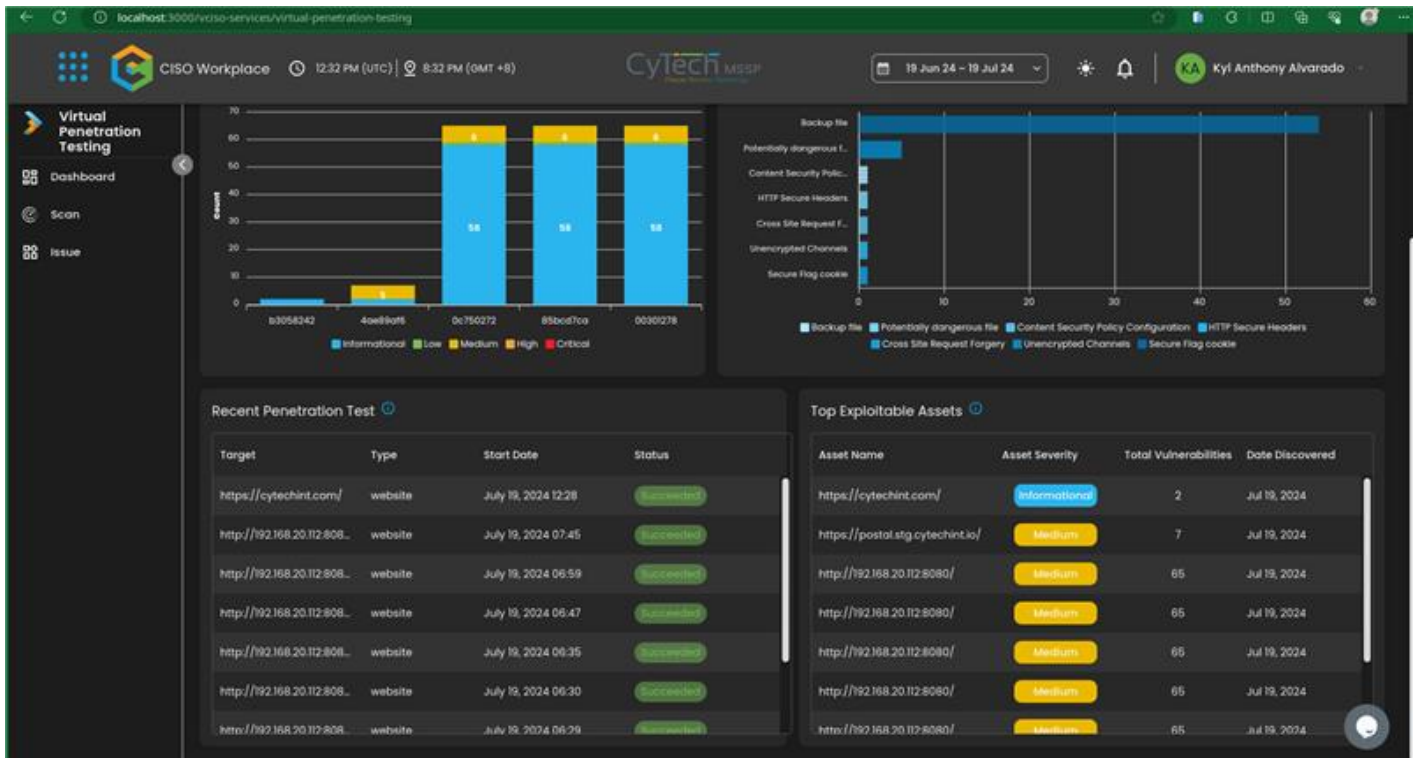
## 📄 New Features:

### Dashboard

- Total Vulnerabilities Detected
- Severity Gauge
- Penetration Activity
- Penetration Graph
- Top Vulnerabilities Detected
- Recent Penetration Test
- Top Exploitable Assets

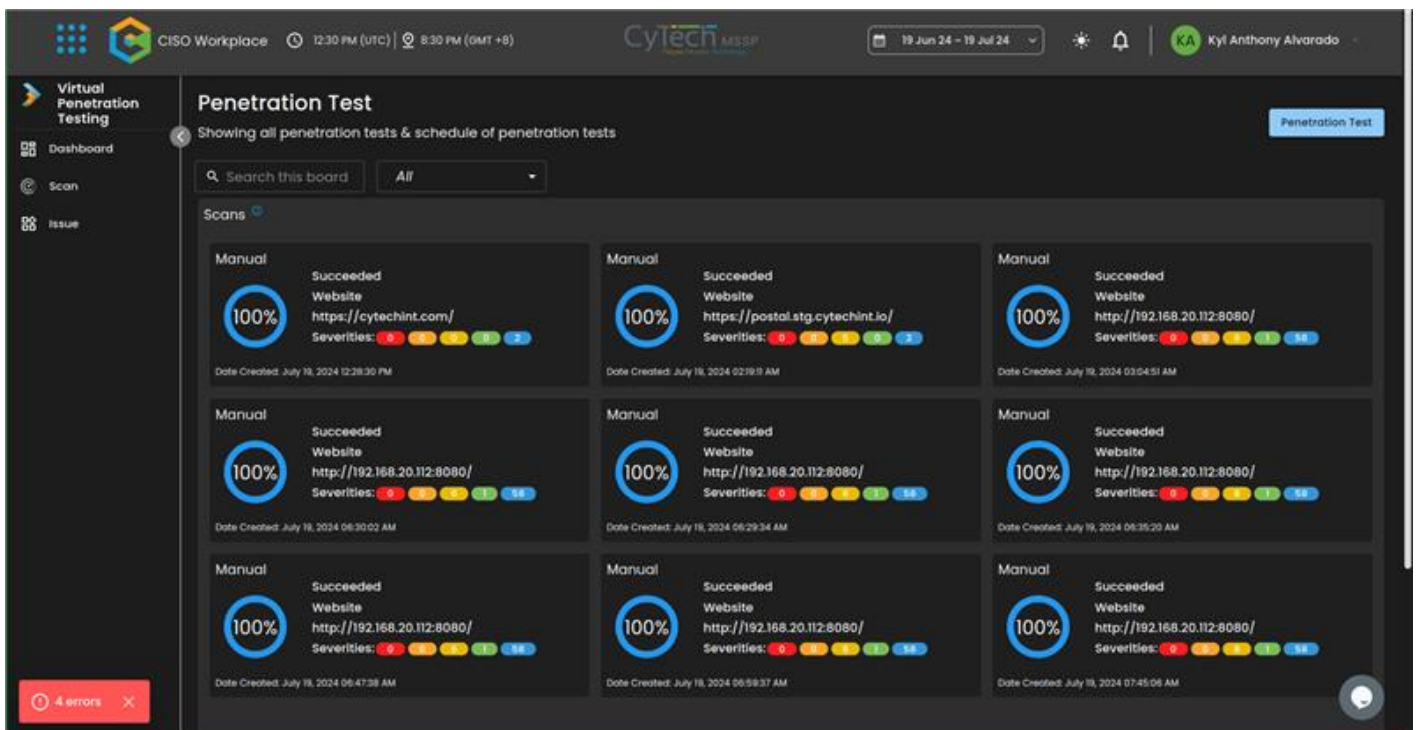
**Limitation: Widget currently not clickable.**





## Penetration Test Page

- List of Scans
- New Scan Button

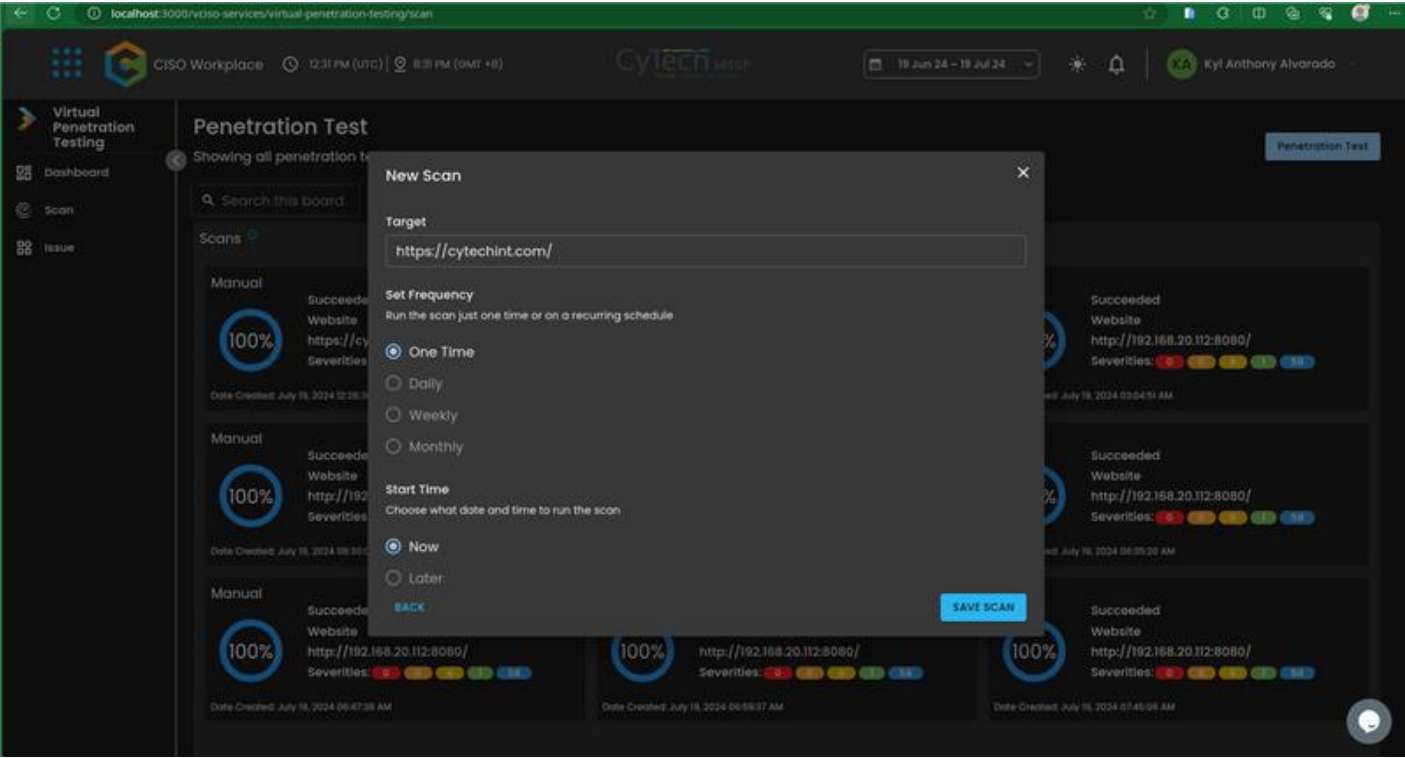


New Scan: User can successfully add new scan

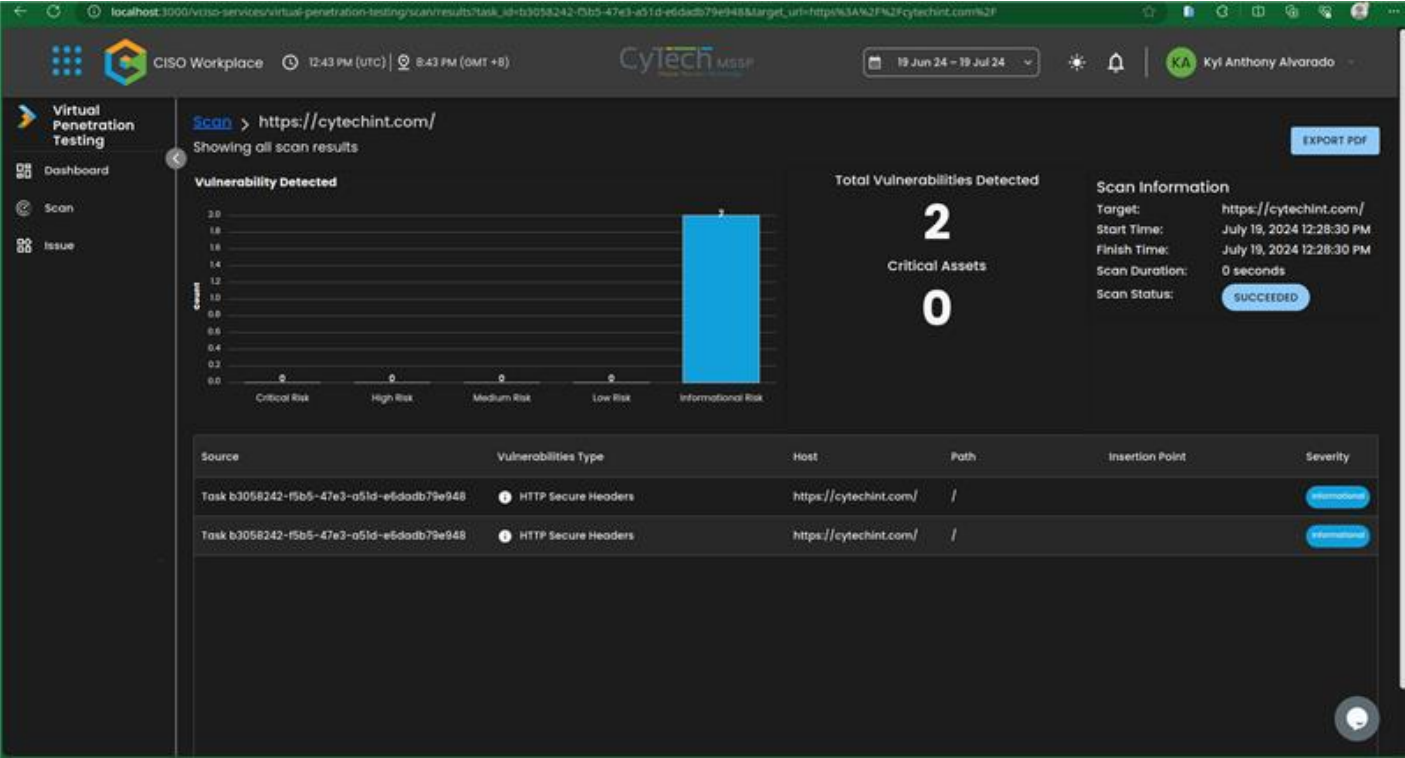
Limitation:

- 1) Only "One Time" setting can be selected for Set Frequency

2) Only "Now" setting can be selected for Start Time

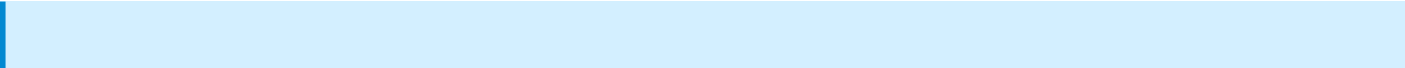


Specific Scan Details



Known Issues:

- Actual progress percentage of the scan



**Type of Attack Information:** Only basic functionalities of each attack above are being performed by the tool. Wapiti Tool is currently being used.

- Can only support limited type of attacks
  - backup (Search copies of scripts and archives on the web server)
  - brute\_login\_form (Brute Force login form using a dictionary list)
  - buster (DirBuster like module)
  - cms (Scan to detect CMS and their versions)
  - cookieflags (Checks Secure and HttpOnly flags)
  - crlf (CR-LF injection in HTTP headers)
  - csp (Detect lack of CSP or weak CSP configuration)
  - csrf (Detects forms not protected against CSRF or using weak anti-CSRF tokens)
  - exec (Code execution or command injection)
  - file (Path traversal, file inclusion, etc)
  - htaccess (Misconfigured htaccess restrictions)
  - http (Identify web technologies used the HashThePlanet database)
  - xss (XSS injection module)
  - upload (File upload vulnerabilities)
  - nikto (Look for known vulnerabilities by testing URL existence and checking responses)

---

Revision #2

Created 19 July 2024 09:16:28 by Aldion Pueblos

Updated 23 July 2024 06:24:37 by Aldion Pueblos