

# CyTech - AQUILA EDR

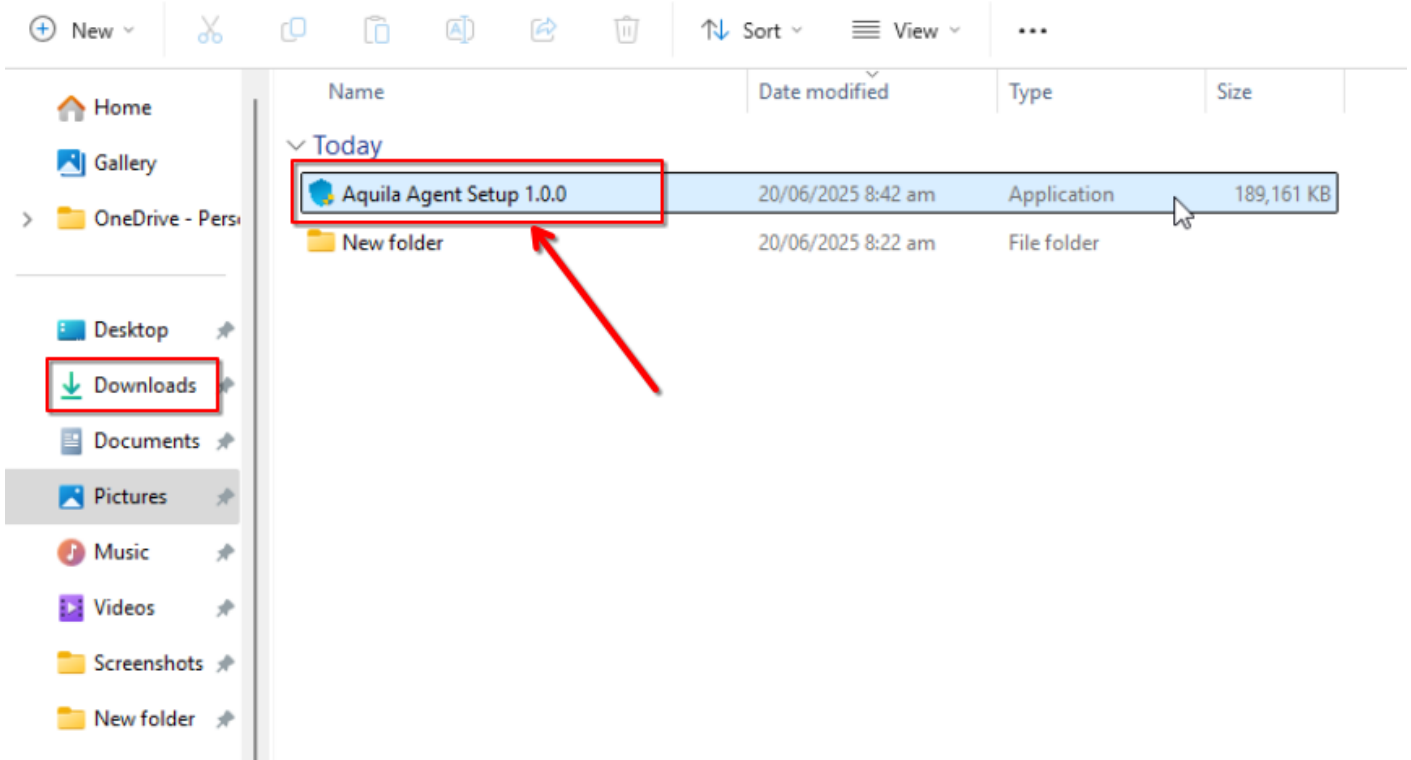
## Endpoint Detection and Response (EDR) - Manual Installation

### Endpoint Detection and Response (EDR)

Endpoint Detection and Response (EDR), is a cybersecurity technology that focuses on detecting, investigating, and responding to suspicious activities and threats on endpoints, such as workstations, laptops, and servers. EDR solutions provide visibility into endpoint activities and help security teams identify and mitigate potential threats before they can cause significant harm.

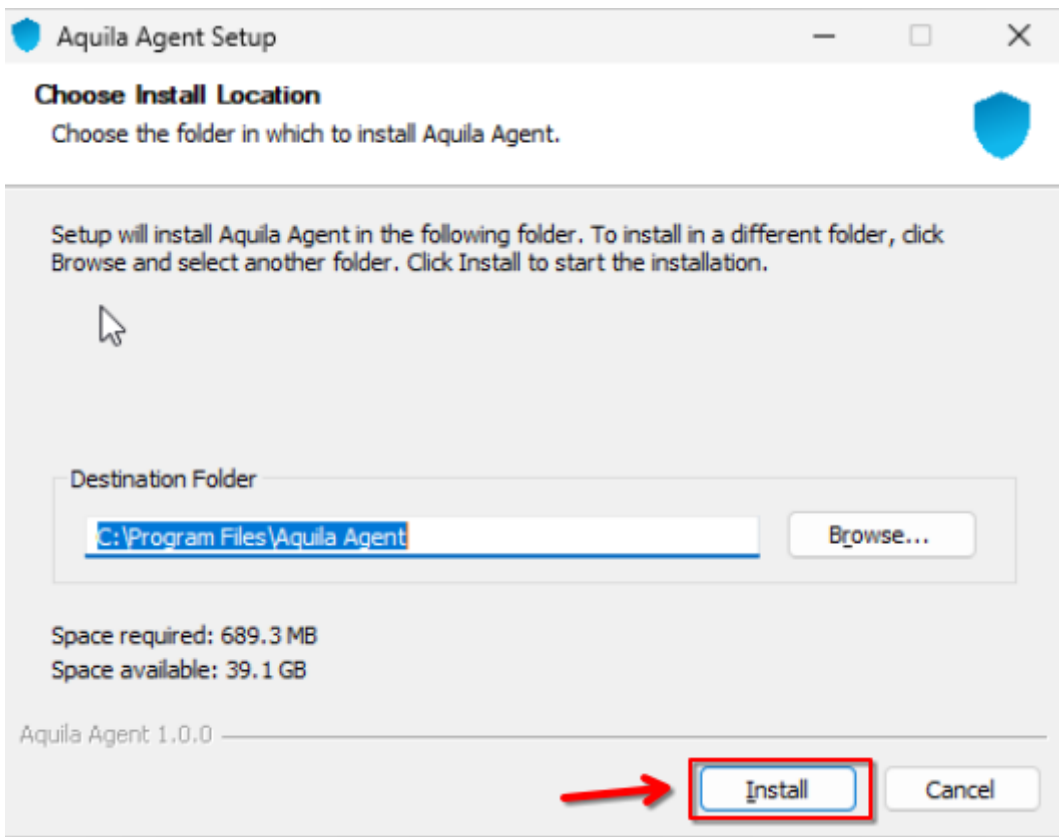
**Please follow the instructions below and refer to the images below:**

**Step 1:** Download the AQUILA Agent Setup installer. Run the setup file to start the installation wizard.

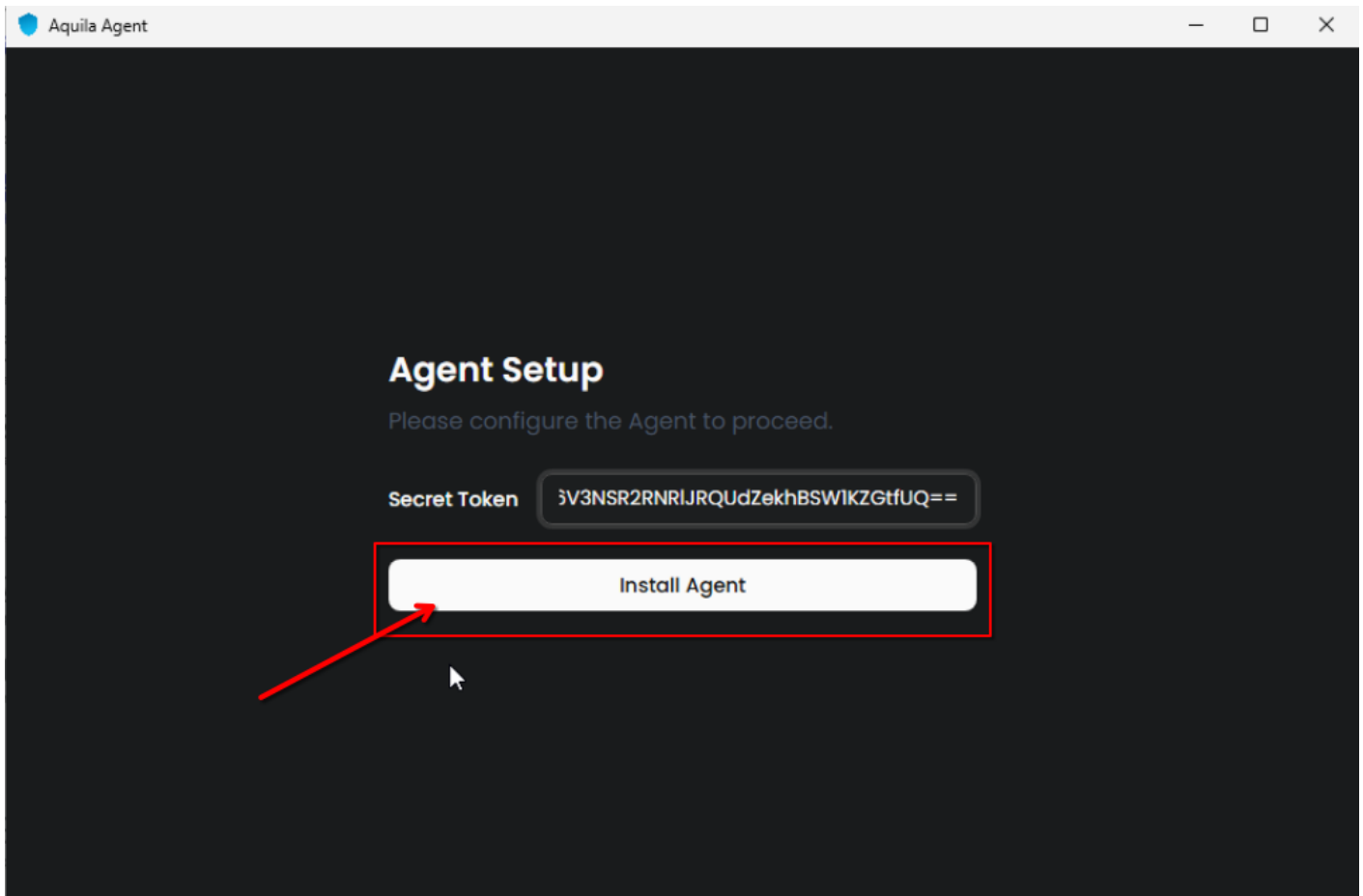


If prompted with a User Account Control (UAC) dialog stating that the app is from an unknown publisher, click **'Yes'** to allow the installer to make changes and proceed with the installation.

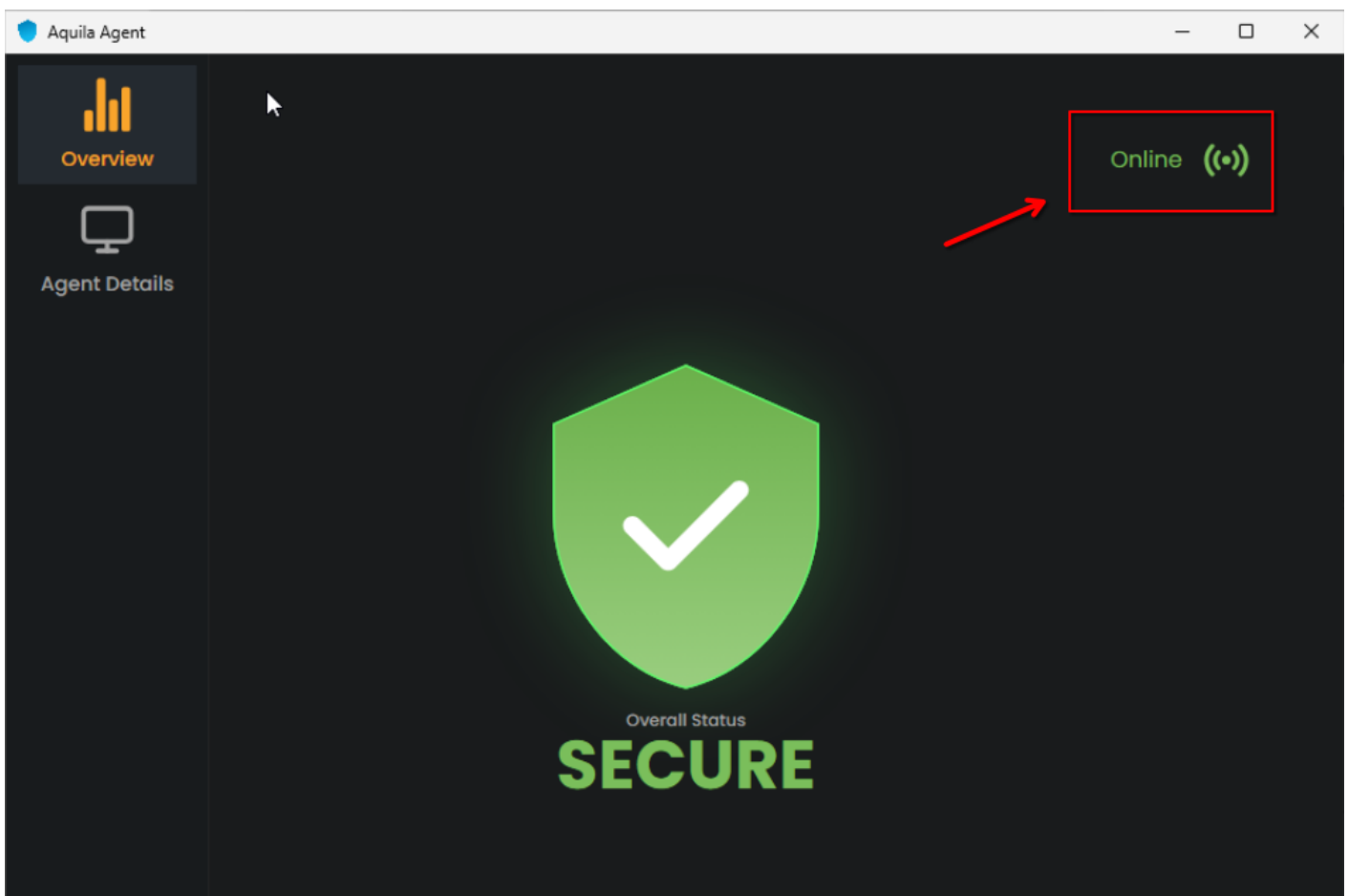
**Step 2:** You may specify a custom installation directory or proceed with the default path. Click **'Install'** to continue with the installation process. Wait for a moment to install the Aquila Agent. After AQUILA Agent has been successfully installed. Click **"Finish"** to close installation wizard.



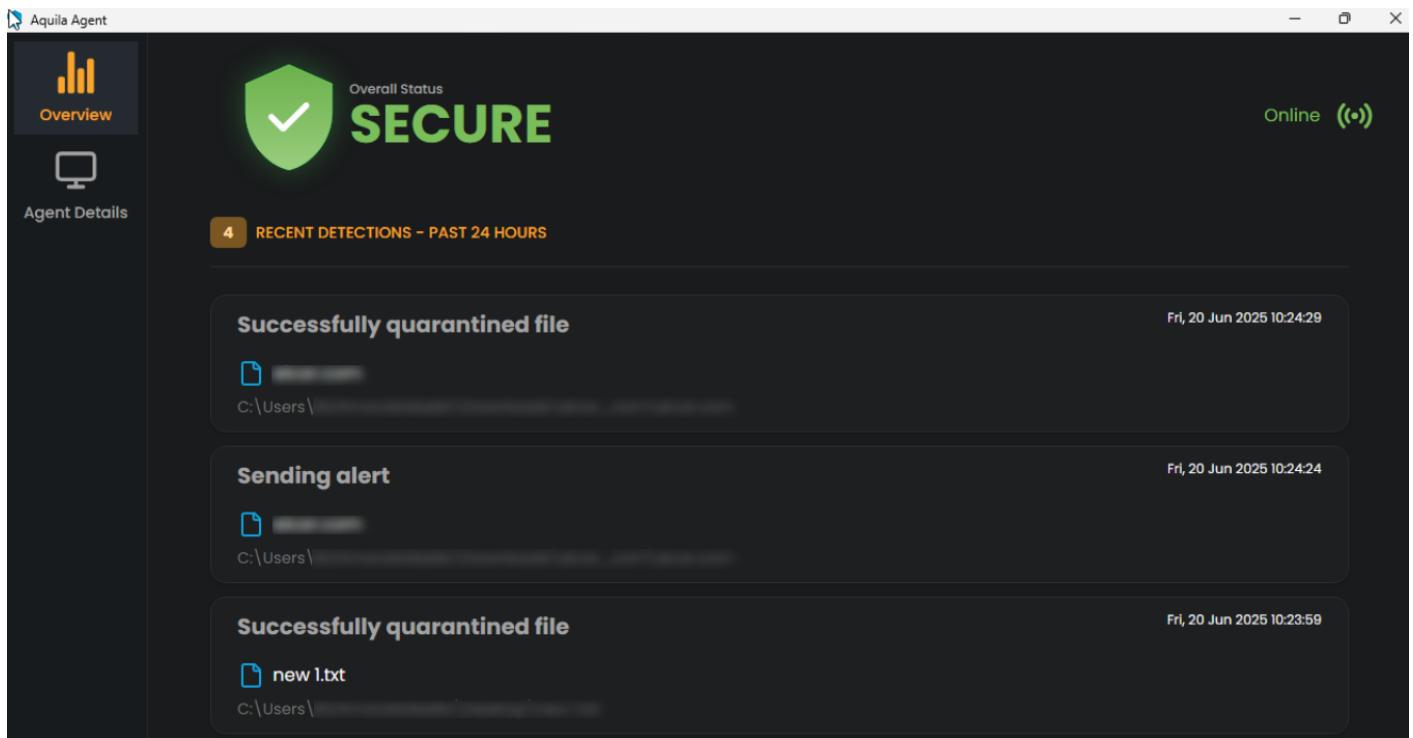
**Step 3:** Provide the required Secret Token to authorize and proceed with the installation. Click "**Install Agent**" to proceed. Please wait a few minutes for the installation process to complete. This will automatically initiate enrollment into the CyTech - AQUILA platform.



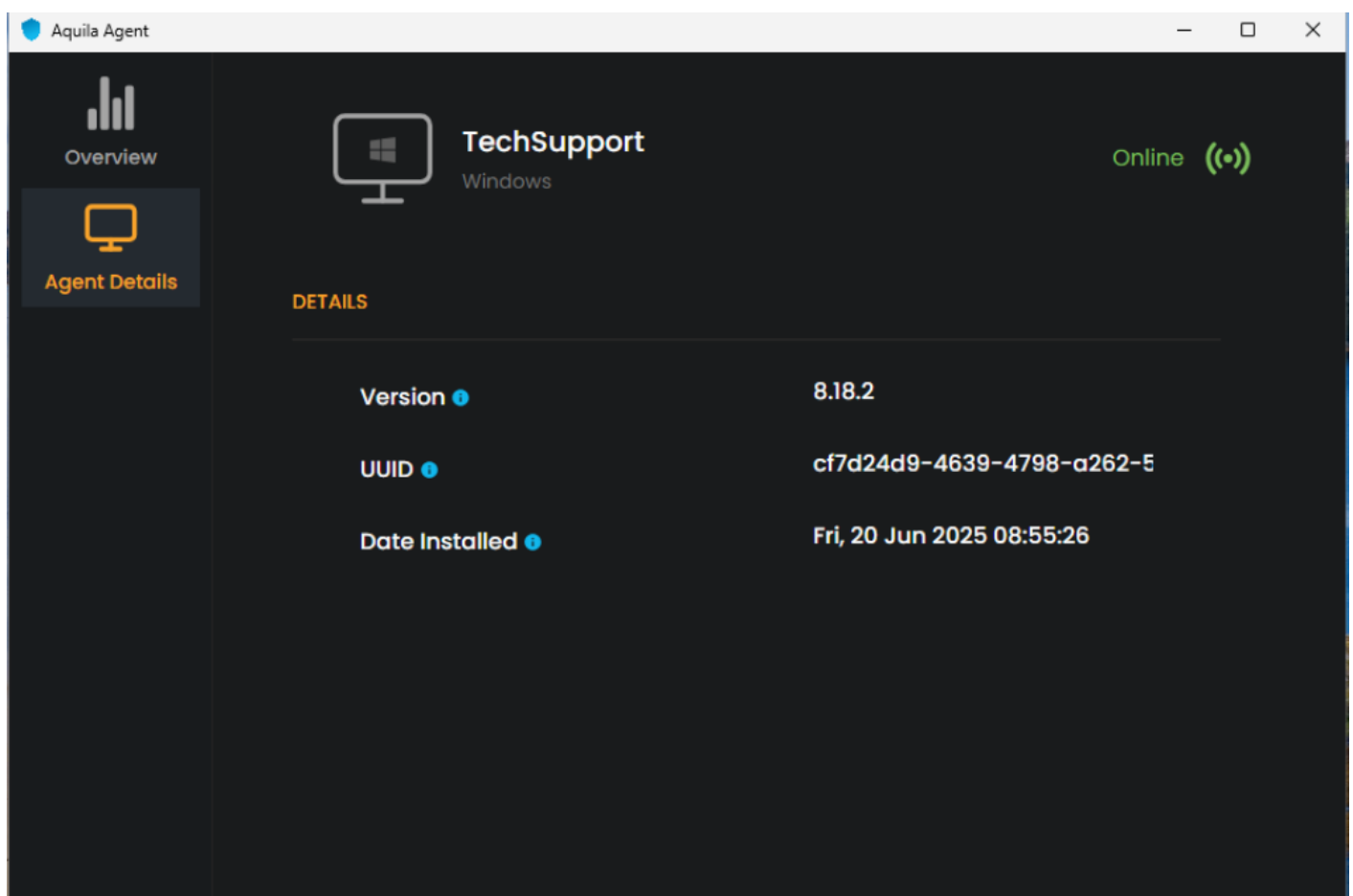
**Step 4:** After successful enrollment, an overview window will be displayed. Please note that it may take some time for the device to reflect an online status. Ensure the device remains connected to the network for the EDR policy to be properly applied.



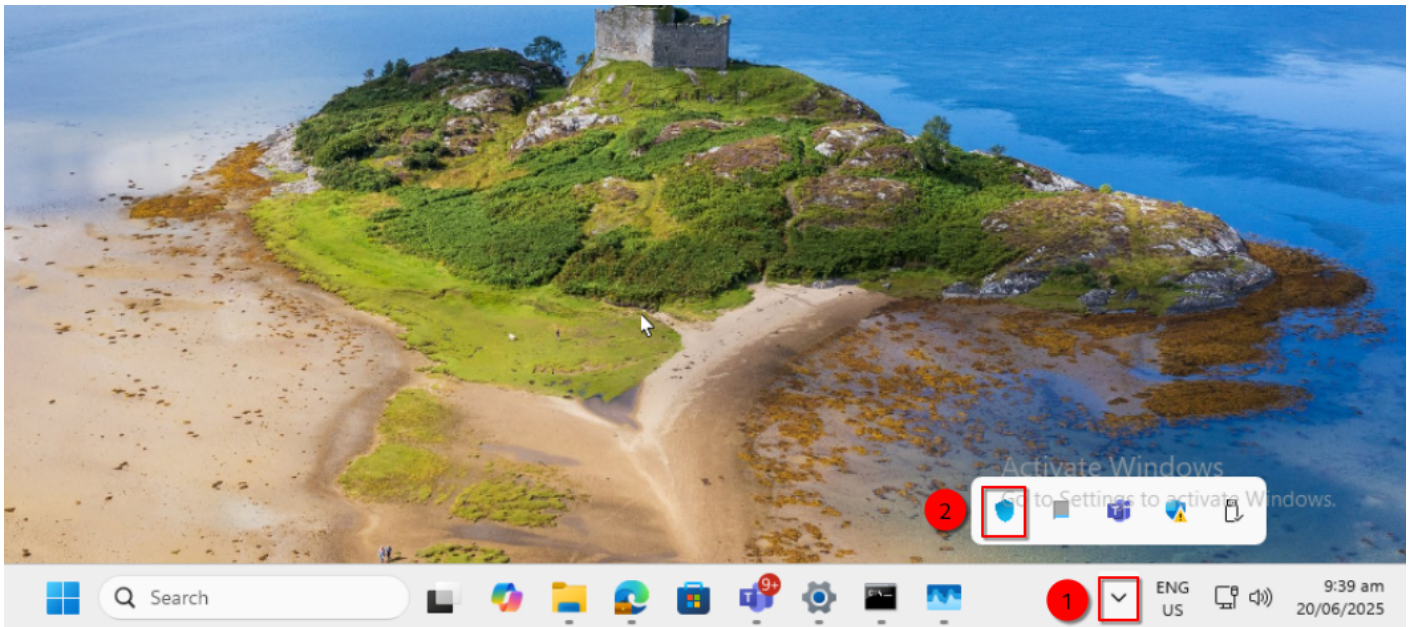
The Overview page provides a centralized dashboard displaying all recent detections related to your endpoint devices. This real-time monitoring allows security teams to quickly identify potential threats, analyze attack vectors, and prioritize response efforts based on severity and impact. By consolidating detection data, the Overview page supports proactive threat hunting and continuous endpoint security management as part of a comprehensive cybersecurity monitoring strategy.



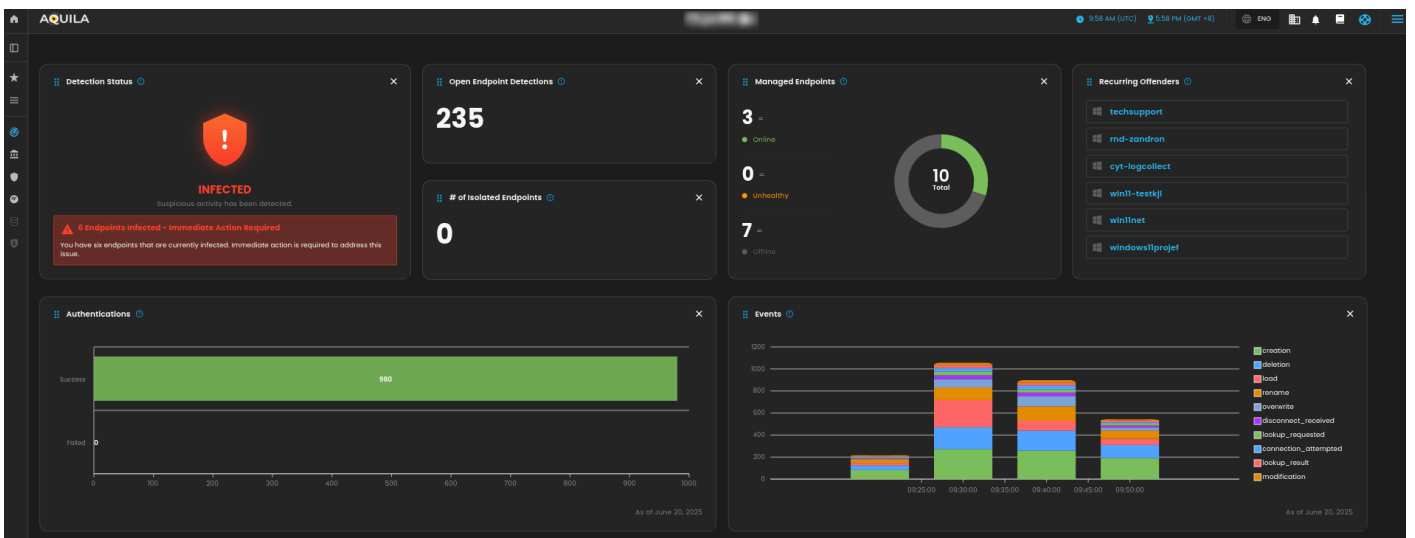
The Agent Details panel allows you to verify the status and identity of your endpoint device.

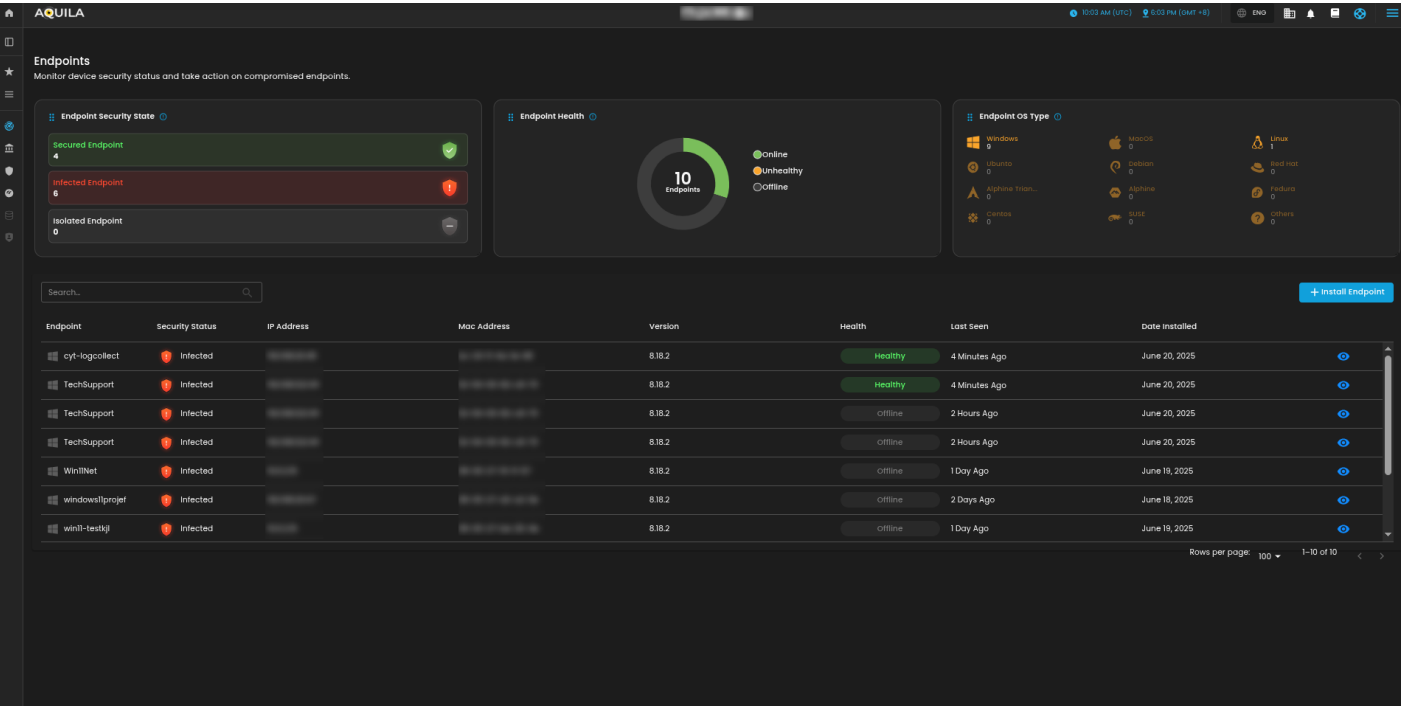
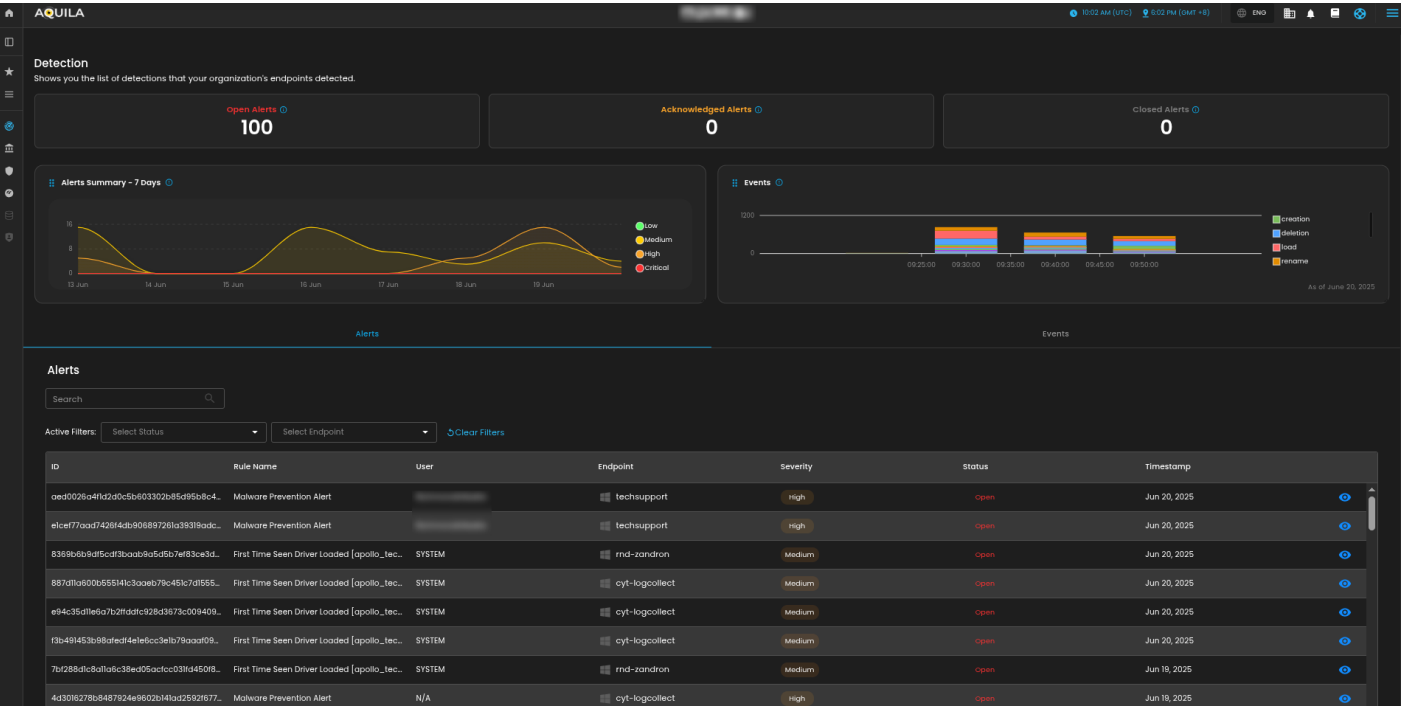


You may also access AQUILA Agent Secure through the Windows taskbar's side dock panel.



For a more detailed report and in-depth analysis, navigate to **CyTech - AQUILA > Cyber Monitoring > Endpoint Detection and Response(EDR)**. This section provides comprehensive visibility into endpoint activity, detection timelines, threat classifications, and response actions to support advanced threat analysis and incident investigation.





If you need further assistance, kindly contact our technical support at [support@cytechint.com](mailto:support@cytechint.com) for prompt assistance and guidance.