

Log Collector Installation Old - Windows

Log Collector Installation in CISO Workplace

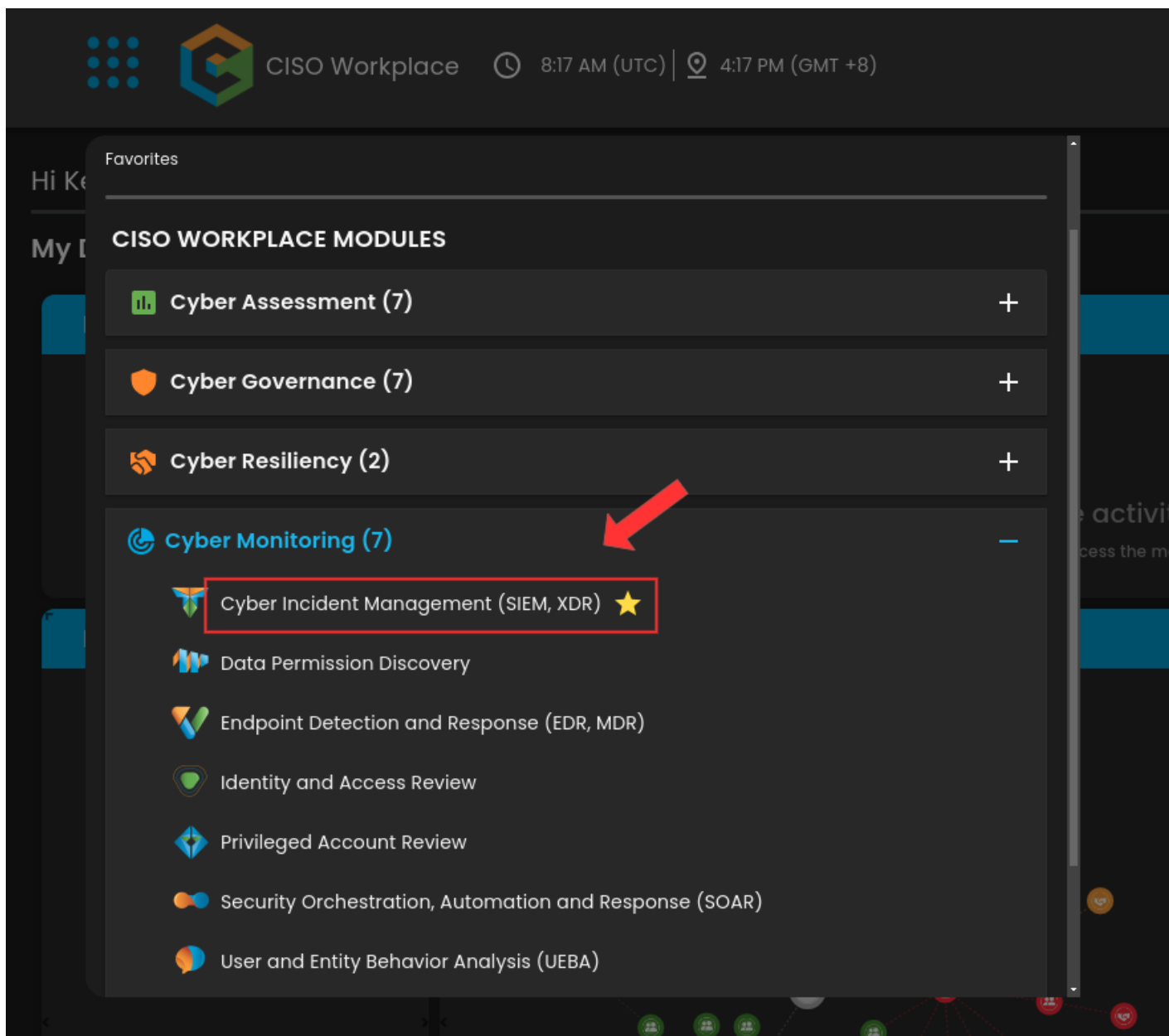
This guide provides step-by-step instructions for installing the Elastic Agent as a log collector in the CISO Workplace environment. By following these steps, you'll set up a secure, automated method for gathering and managing system logs, enabling centralized monitoring and analysis essential for cybersecurity operations.

Pre-requisites:

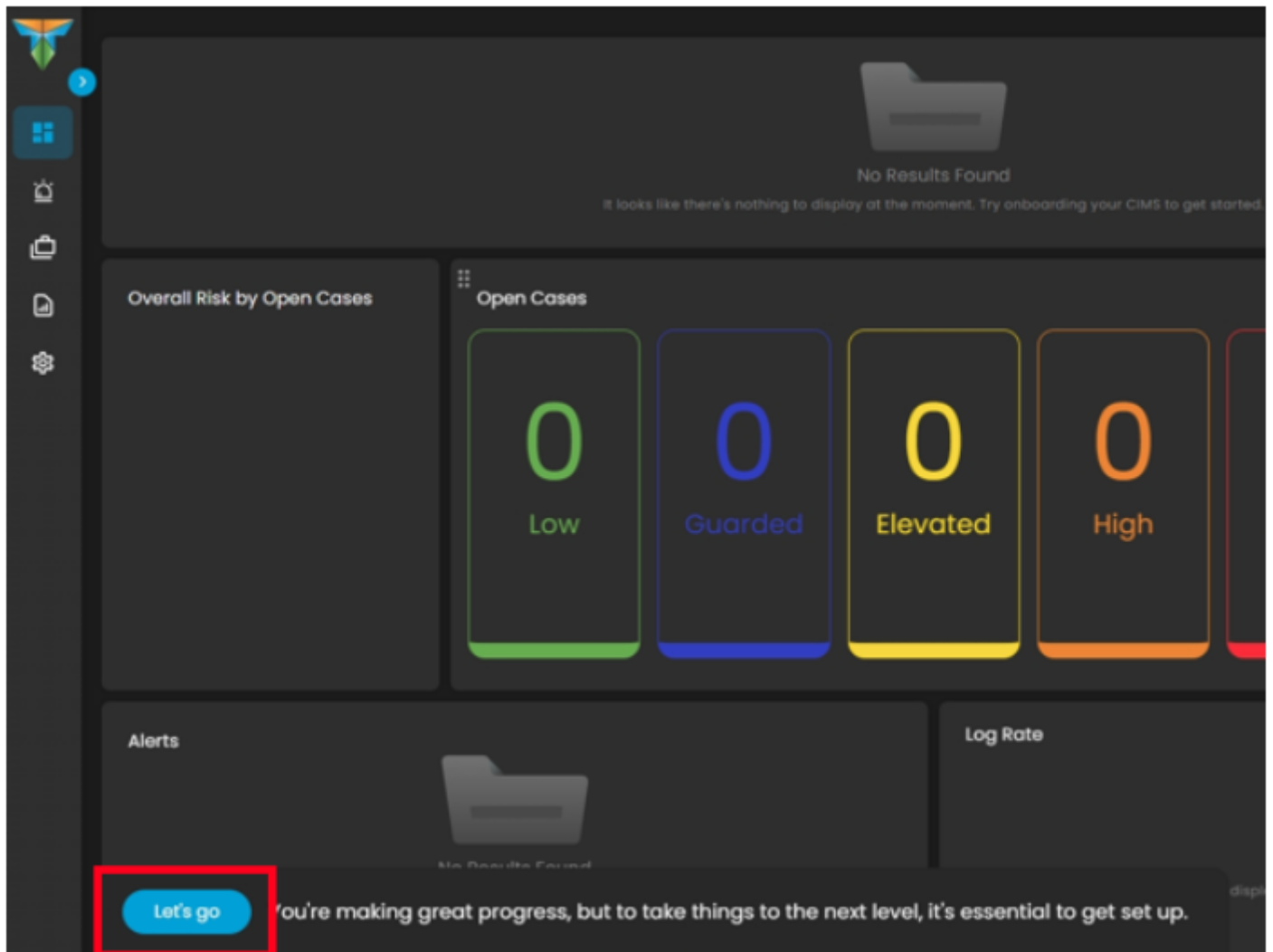
- Access to CISO Workplace (Only users with "Owner" or "Admin" role are able to access the Log Collector Installation information).

Steps to Add Log Collector

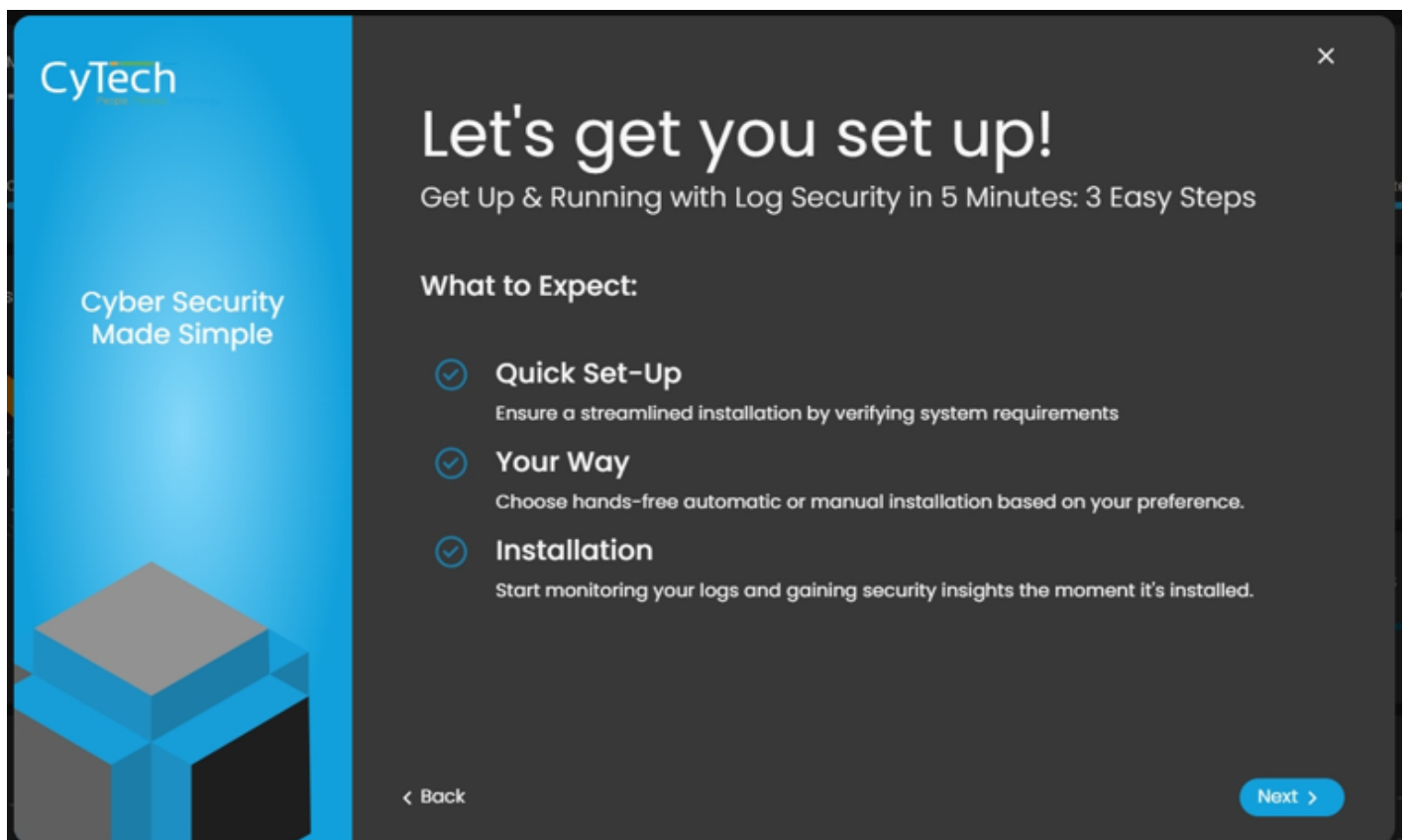
1. Go to the CIM Module.



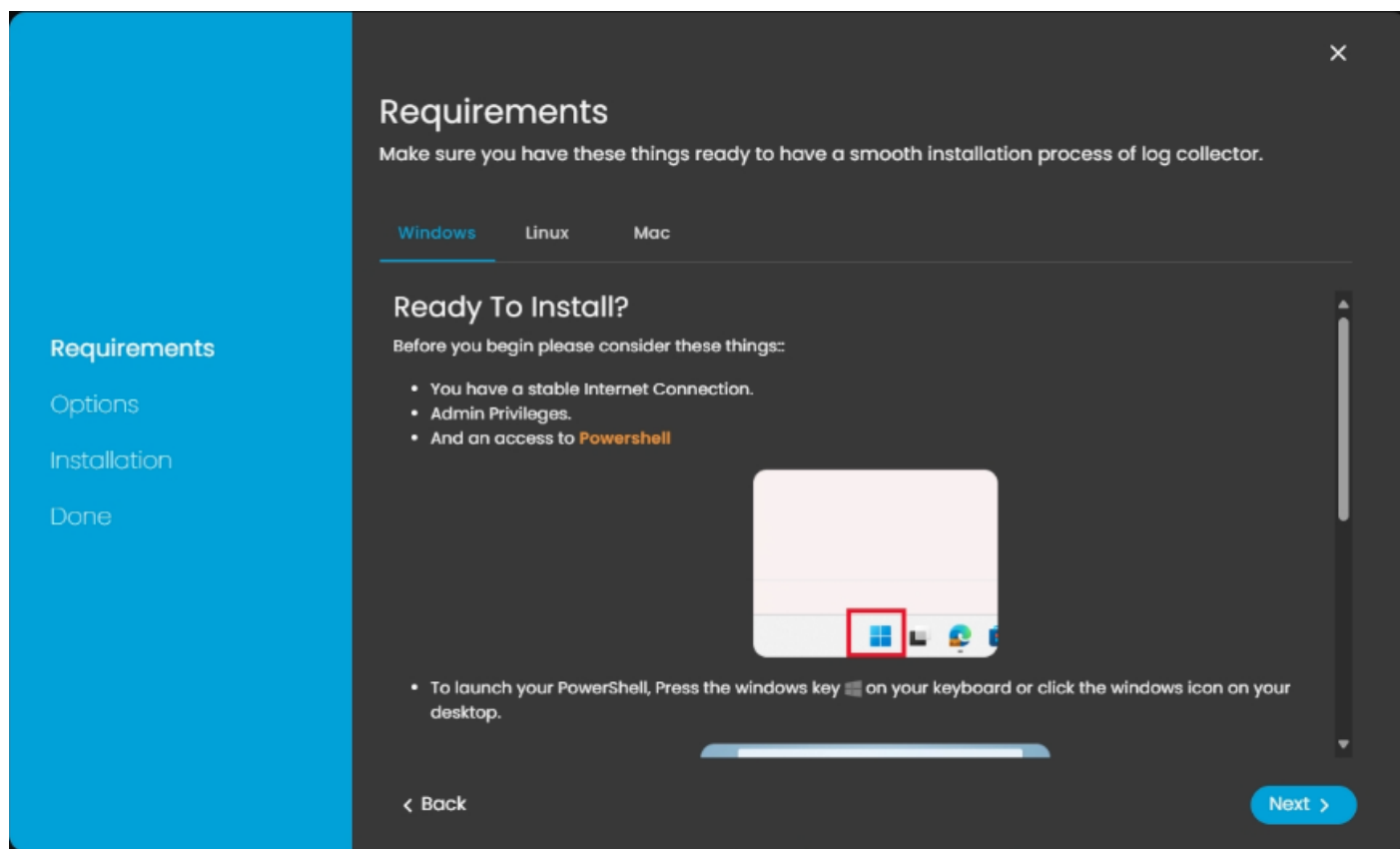
2. In the CIM Dashboard, click on the button that says "Let's Go". This will then display the Windows log collector installation.



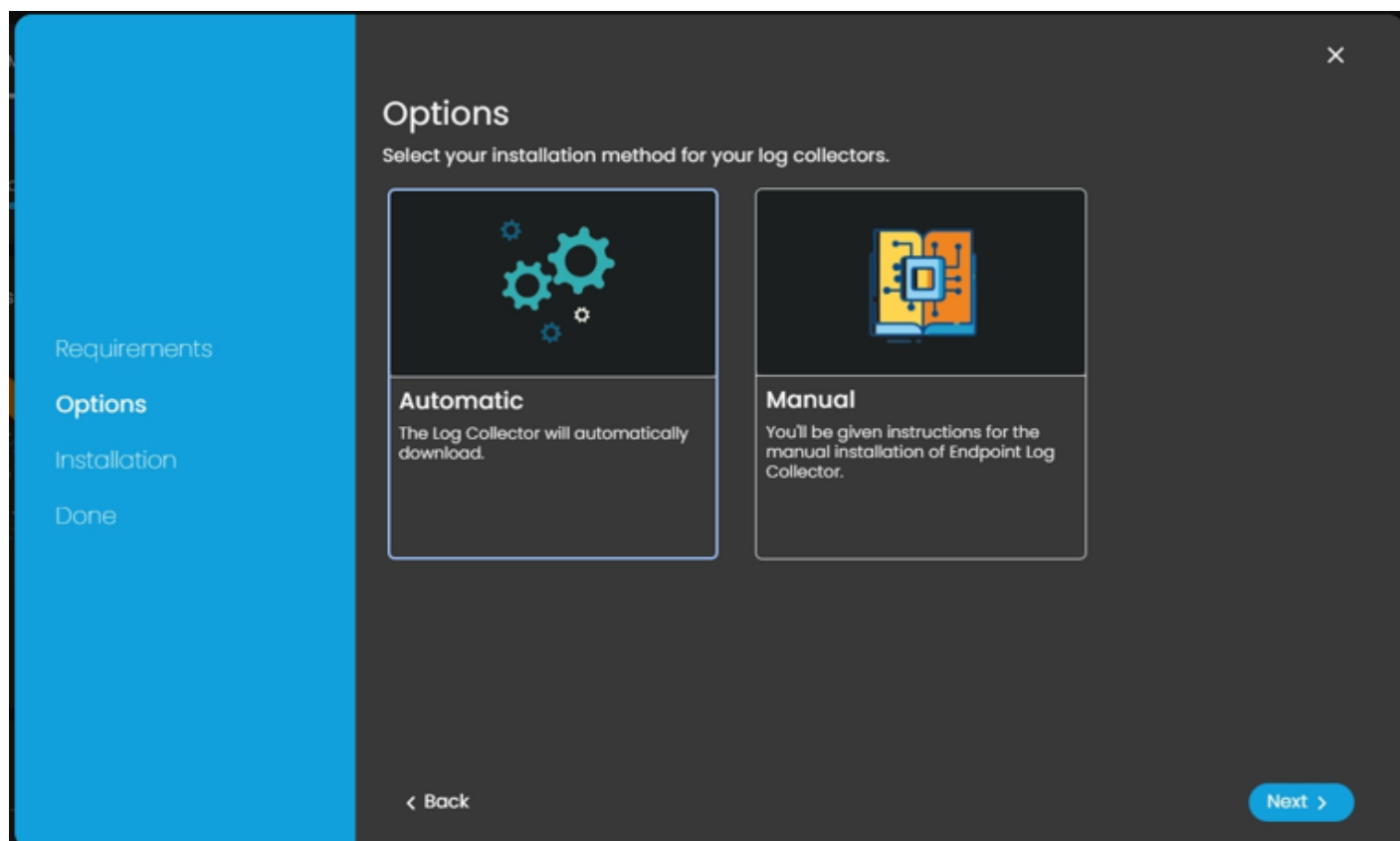
3. Once the installation display is shown, click next to proceed.



4. Carefully review the system requirements for your operating system to ensure compatibility and prevent potential issues during installation or usage. It is important to verify these prerequisites before proceeding.



5. From the options, select the Automatic installation option.

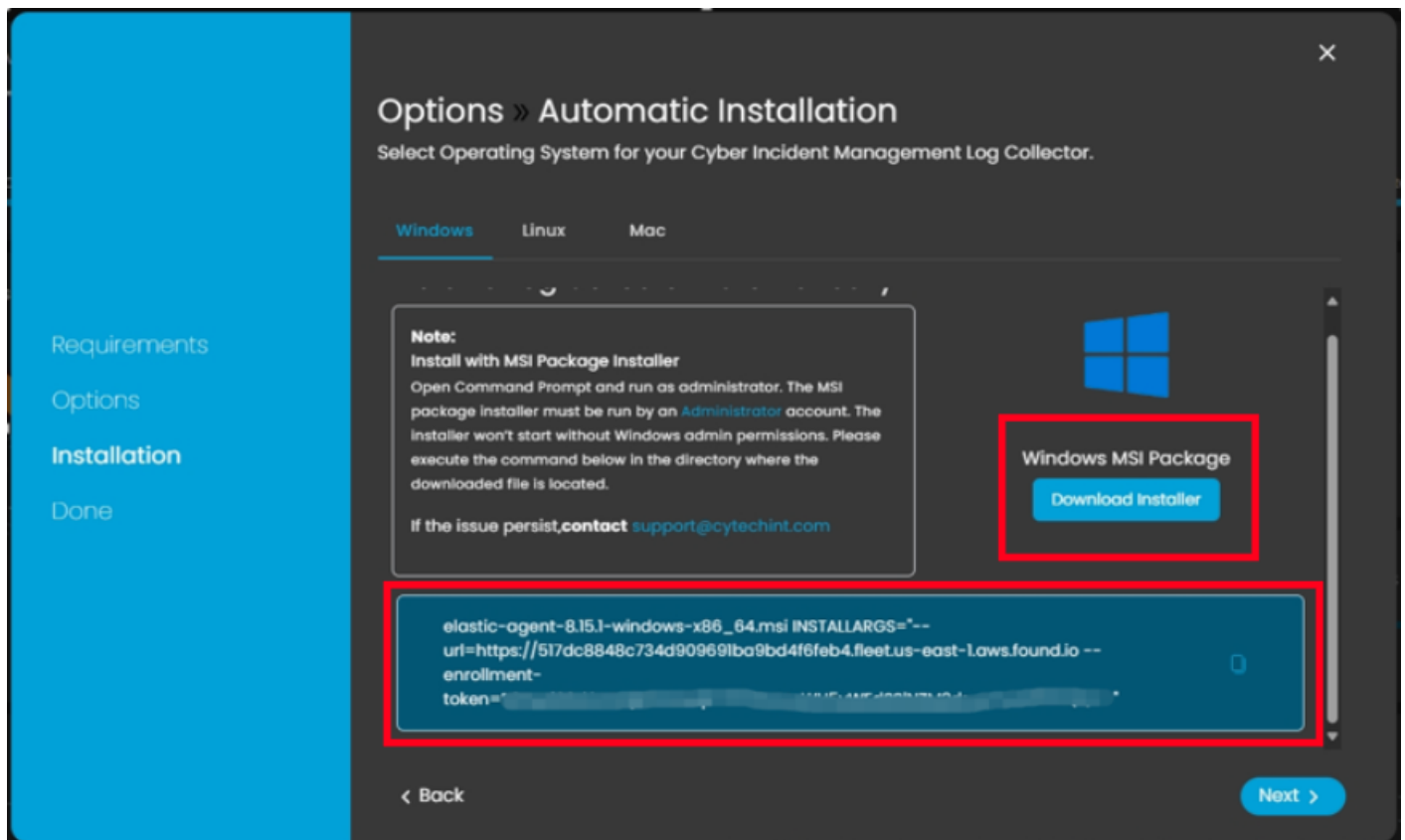


6. Carefully follow the instructions for the automatic installation.

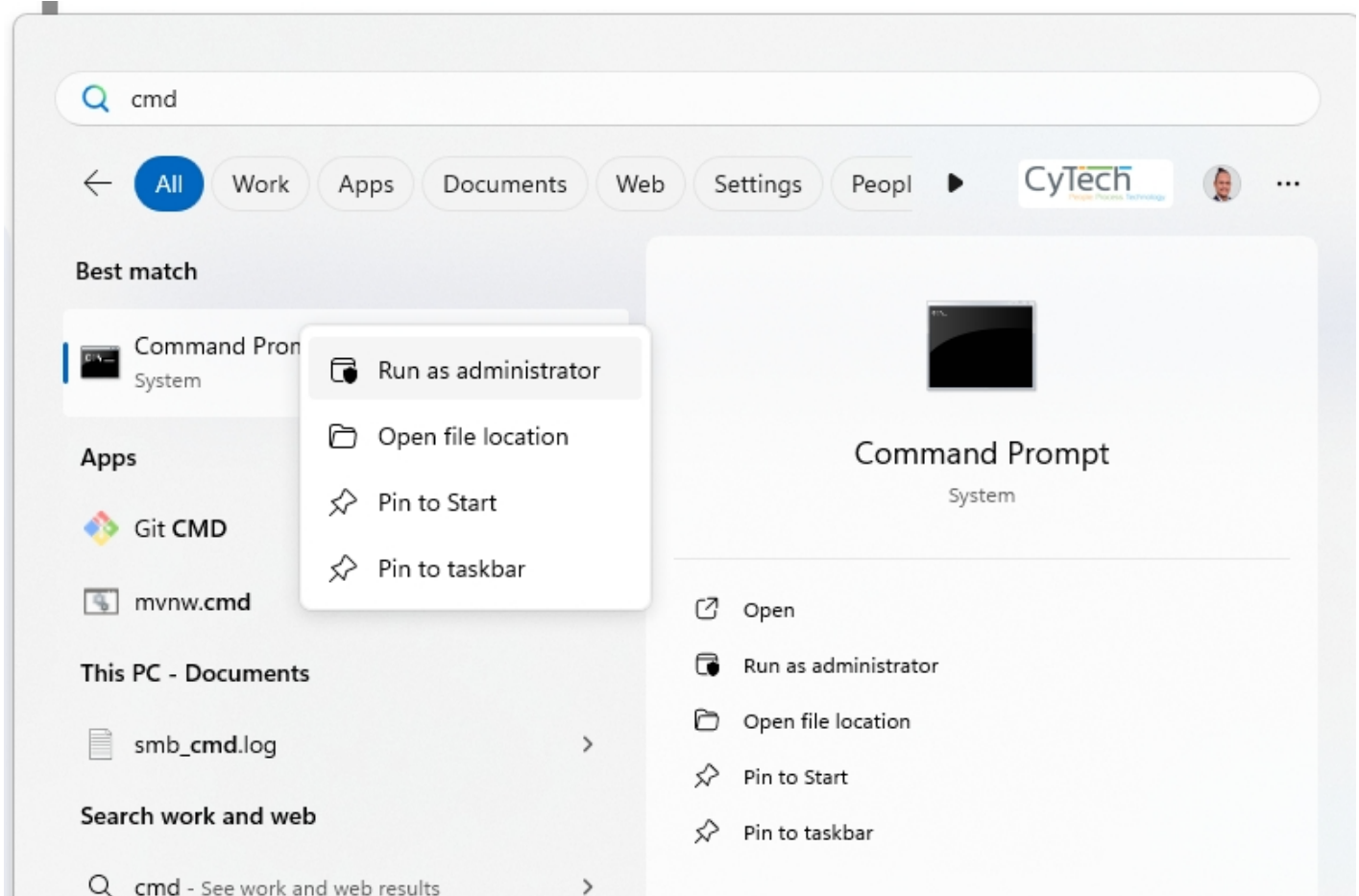
6a. Download the Windows Installer

- Click on the "**Download Installer**" button to download the Windows MSI Package for Elastic Agent.
- The URL can also be found on https://artifacts.elastic.co/downloads/beats/elastic-agent/elastic-agent-8.15.1-windows-x86_64.msi

6b. Copy the command displayed on the installation page. You will need this command to complete the installation process for the log collector in the next steps.

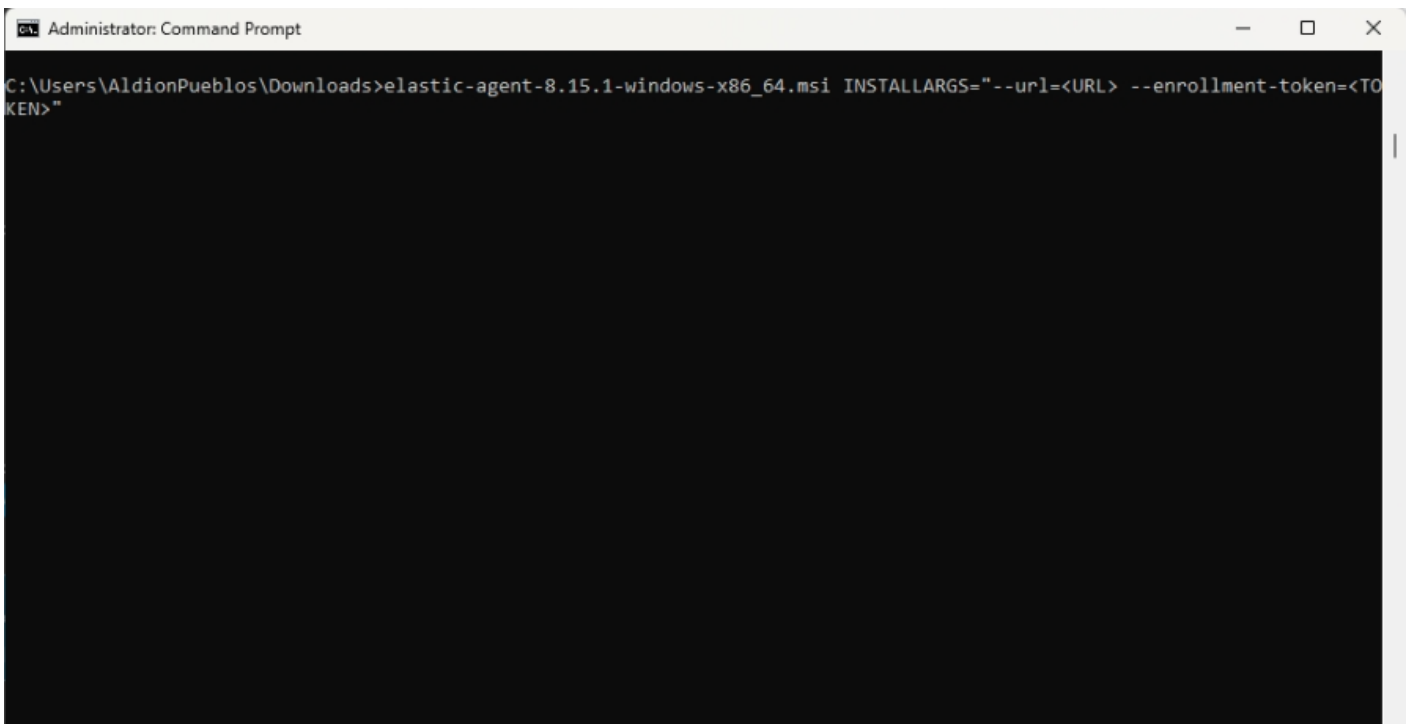


7. Open the Command Prompt and run as Administrator.



8. Execute the command displayed in **Figure 6b** as shown in the manual.

For example (elastic-agent-<VERSION>-windows-x86_64.msi INSTALLARGS="--url=<URL> --enrollment-token=<TOKEN>").



If you need further assistance, kindly contact our support at support@cytechint.com for prompt assistance and guidance.

Revision #9

Created 6 November 2024 08:11:56 by David Napoleon Romanillos

Updated 28 May 2025 09:04:23 by Richmond Abella